



PCM

**£1,150**

**\*\* AVAILABLE END OF MAY - UNFURNISHED \*\***

This beautifully presented, one bedroom, ground floor maisonette is situated walking distance of High Wycombe's train station and town centre. The accommodation comprises; entrance Porch, spacious lounge open plan to kitchen, bedroom and bathroom. The property also benefits from; one allocated parking space, communal garden and modern electric heating & hot water system.

HOLDING FEE: £265.38

DEPOSIT REQUIRED: £1,326.90

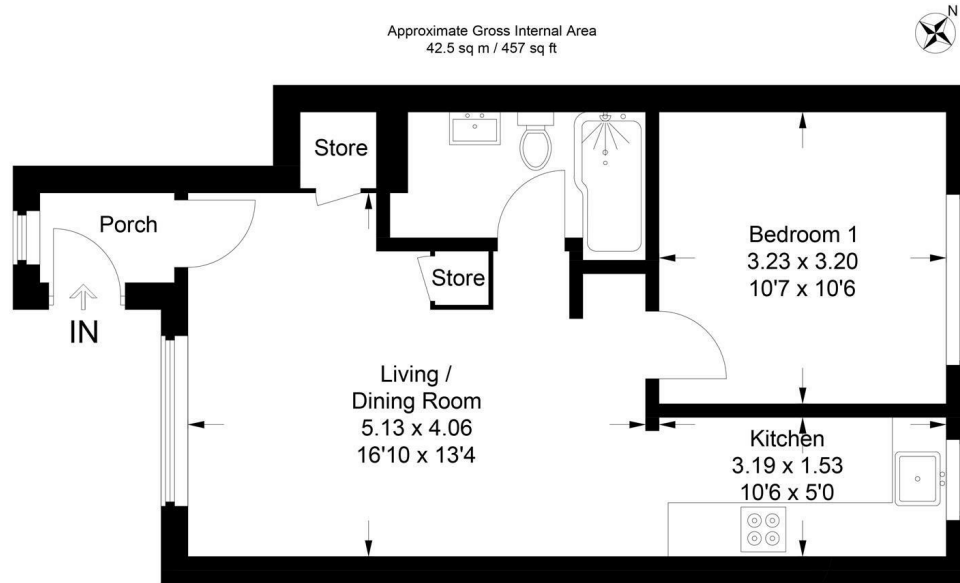
LENGTH OF TENANCY: 12 MONTHS

- AVAILABLE END OF MAY
- ALLOCATED PARKING
- ONE BED MAISONETTE
- LARGE LIVING ROOM
- CLOSE TO TOWN
- WALK OF TRAIN STATION
- COMMUNAL GARDEN
- GROUND FLOOR
- ELECTRIC HEATING
- MODERN KITCHEN



**4 Bowstridge Court Totteridge Road, High Wycombe, Bucks, HP13 6HB**

Estate Agents ~ Lettings Agents ~ Valuers ~ Independent Mortgage Advisors



**Ground Floor**

This plan is for layout guidance only. Not drawn to scale unless stated. Windows and door openings are approximate. Whilst every care is taken in the preparation of this plan, please check all dimensions, shapes and compass bearings before making any decisions reliant upon them.  
© CJ Property Marketing Ltd Produced for Hurst

